

**REMEMBERING MR. TOWNSEND**

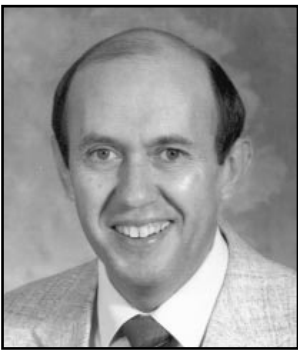
By. Nikki Kindle

Mr. Don Townsend, the principal of East Elementary for several years, passed away on Sunday, March 18, due to deteriorating health from Lou Gehrig's disease. The teachers, students, and staff of East will miss Mr. Townsend greatly.

Everyday Mr. Townsend would have a cheerful greeting for the students, taking the time to learn everyone's name. He was not just any ordinary principal; he went out of his way to make learning a fun experience.

In summer school, you could find Mr. Townsend teaching kids yo-yo tricks. During the regular school year, Mr. Townsend would be encouraging students to do their best. Chad Corwin, a former student under Mr. Townsend, says, "Mr. Townsend was a calm, well-respected principal, who all the students looked to for guidance."

Everyone who knew this friendly principal respected him because responsibility and kindness were the concepts that he taught. Never will anyone fortunate enough to have met Mr. Don Townsend forget him.



Don Townsend

November 18, 1941 - March 18, 2001

Don Townsend lost his fight with ALS on March 18, 2001. Don was originally a Kansas City native who moved to the Springfield area. Don spent a majority of his professional years in education administration, and was a principal in the Ozark, Missouri school district when he was diagnosed. Don was also responsible for developing the world's craze of the Yoyo, working with Flambeau Toys for seven years. Everyone that knew Don will tell you of his gallant mission to spread cheer and encouragement throughout the ALS community, visiting and transporting patients...doing anything possible to make each day a little brighter for those living with ALS. Don's wife Elaine is a resident of Springfield, Missouri.

**The Second Annual Family Barbeque**

Saturday, June 22

10:30 am - 1:30 pm

Shawnee Mission Park

Shelter #8

Please bring a side dish to share

Please RSVP no later than June 19th (913) 648-2062

### WICHITA/HUTCHINSON SUPPORT GROUP NEWS

The Hutchinson Support Group met Wednesday, May 1st at the Grace Episcopal Church to hear an inspiring message from Juli Beard CRRT of Alternacare speak about the effects of ALS on the family and how the different breathing devices can aid in quality of life and comfort. She is the sister of Blake Hanzlick of Augusta who was our Olympic Torch Bearer this year. There were 11 in attendance with a very interesting discussion following the presentation.

The Wichita Support Group met Thursday evening, May 2nd at the Grace Presbyterian Church to see the demonstration of different breathing devices which aid ALS induced apnea. The discussion was lead by Juli Beard, CRRT and J.D. Rein, owner of Alternacare of Great Bend. They both stressed the difference that patient care and personal involvement with the comfort of the ALS patient can do to make life more tolerable. They stressed to the group that it was their duty to become informed consumers and to shop around for the service they would ultimately get from renting or purchasing equipment. It was a very informative evening with 15 in attendance.

Next month the Hutchinson and Wichita Support Groups will have Cindy Jones from "Assistive Technology for Kansans" who will present a program on the latest in speaking and computer assisted devices with demonstrations of specific software.

The next Caregiver's Support Group will be a pot luck luncheon and interactive session to be held on Saturday, May 18th at the Grace Presbyterian Church in Wichita from 12:00 noon to 3 p.m. The leaders will be Nancy Persinger, Salina (former ALS caregiver) and Jean Haley, RN. All caregivers from Western Kansas and Northern Oklahoma are cordially invited to attend. Bringing a dish to pass is optional, there will be plenty of food for all. Please come and share your thoughts.

Memorial Day marks the first year anniversary death of Jeff Taylor. Jeff was a loving husband, father and son. He left behind his family, friends and co-workers after being diagnosed with ALS in January 2001. We all prayed for the grace and dignity to accept the hand we had been dealt. Our prayers were answered in regard to having wonderful people from all walks of life share their love and support. A year later, and so many people still reach out to help us.



ALS has had a profound affect on all of us. With the overwhelming sadness and loss my family experienced, we also have found strength and courage to hope for a future without ALS. Our sorrow brought a community together...lots of people, praying, sharing, caring and willing to do what it takes to offer the same hope to anyone suffering from this disease. Springfield has been blessed with an ALS support office, which continues to be a huge help. Today, in Springfield and southwest Missouri, the message of awareness continues, and many, when asked, can tell you all about ALS.

We love and miss Jeff big time!

Marilyn, Molly, Michael and Cyrus

### PAPA

My Grandpa Dale is a really great guy  
He was raised to be honest and never to lie.

Born on a farm he worked really hard

He also played baseball a port where he starred.

His parents were loving and his siblings were too

He married my grandma and started a family anew.

They moved to K.C. when my father was born

My grandpa sold tires for the company Firestone.

He was a very good father according to my dad

He is there for you always even if you are sad.

A Chiefs and a Royals fan he supports them all

He loves all sports including basketball.

His favorite team is the Royals the K.C. baseball team

He was friends with the players even the mean.

He is a slender man and very tall

I would want him on my side if I were in a brawl.

He wears long pants and nice shirts when we're around

And if we are gone I am sure he'll dress down.

He eats cornbread and beans and any wild game  
If there is food on the table he will treat it the same.

When I was born he loved me very much

He would always hold me with his gentle touch.

He would take me on walks and to the dollar store

When I went to visit him I never was bored.

I played cards and catch with him all the time

I finally beat him when I was nine.

He is a great grandpa to my sisters and me  
He teaches me to be the nicest person that I can be.

He supports me in the many things that I do

I want to tell him I love him through and through.



By Jason Williams

Jason's grandfather, Dale Williams, has ALS. Jason is 17 years old and this poem about his grandfather was written for an English assignment. Jason is the son of Frank and Mary Williams. The Williams family lives in Springfield, Missouri.

## ALS GENE STUDY

We are actively seeking individuals with sporadic ALS (non-familial) and their families for participation in the ALS Risk Gene Study, conducted by Dr. Robert H. Brown at Massachusetts General Hospital. This NIH-funded study focuses on understanding the genetics behind ALS.

The purpose of this study is to identify genes that may be associated with the occurrence of sporadic ALS. We believe that changes in certain genes may put an individual at greater risk of developing ALS. We call these susceptibility or risk genes.

We are currently accepting blood samples from individuals with sporadic ALS and their parents and/or siblings. We will also ask participants for a family history, as well as permission to review the medical records pertaining to the onset and progression of ALS. There should be no costs incurred from participation in this study, and travel to Boston is not necessary. Arrangements will be made for participants to have their blood drawn locally.

Though there are no direct benefits for those involved in this research, we believe that an understanding of the genetics behind the disease will lead to more effective screening, diagnosis, and treatment.

For further information, please contact:

Diane McKenna-Yasek, RN, BSN, Neuromuscular Research Coordinator, or  
 Kathryn M. Canniff, Clinical Research Assistant  
 Massachusetts General Hospital  
 114 The Navy Yard, Room 3125  
 Charlestown, MA 02129  
 Phone: (617) 726-5750  
 Fax: (617) 726-8543

### WICHITA CAREGIVER TRAINING

Twenty-two ALS caregivers attended the 1st Caregiver Support Group and Luncheon on Saturday, April 20<sup>th</sup> at the Grace Presbyterian Church.

There was a wide variety of experience - from the caregiver who is assisting in the care of the newly diagnosed patient to the caregiver of one admitted to inpatient Hospice, to the caregiver of a newly deceased who is still struggling with the issues that arose during the caregiving years and trying to come to terms with the abrupt changes in their life.

It was a completely interactive interchange of ideas and experiences. Everyone commented on how helpful the day had been and voiced a unanimous decision to have the group repeated on a monthly basis. On the 3<sup>rd</sup> Saturday of each month at the Grace Presbyterian Church, Wichita.



On Friday, April 26<sup>th</sup>, world renowned researcher, Dr. Robert Brown spoke to the ALS community in Kansas City. Dr. Brown—Associate Neurologist at Massachusetts General Hospital, Professor of Neurology at Harvard, and Fellow at the Institute of Medicine—discussed the current status of ALS research.



#### SPRINGFIELD SUPPORT GROUP NEWS

The Springfield Support Group meeting was held on April 16, 2002 at the Springfield ALS office. There were 12 in attendance. The speaker was Stacie Amschler from Southwest Center for Independent Living. Stacie discussed services available through their center. Update on Survival Challenge was given by Kim Goble.

#### OMAHA SUPPORT GROUP NEWS

In April, Ruth, from Presbyterian Outreach, talked about their various services, including equipment loan program and respite care services. These are services desperately needed by patients and their families so it was helpful for group members to hear about their availability. Discussion this month also centered on the Bob Hohn Celebrity Golf Tournament in Lincoln on June 17<sup>th</sup>, as well as beginning discussions on the Walk to D'Feet ALS scheduled for September 21<sup>st</sup>. Group members continue to join in support and encouragement of one another, on a monthly basis.

#### KANSAS CITY SUPPORT GROUP NEWS

The Kansas City Night Support Group met Tuesday, May 7, at the Second Presbyterian Church. Patients, family members and friends enjoyed the opportunity to become better acquainted as they played a "new and improved" version of Bingo as part of our Fun Night activities.

At the next Night Support Group, Tuesday, June 4<sup>th</sup>, Board President, Terry Betzelberger will report on the National ALSA Conference in Washington D.C.

#### LINCOLN SUPPORT GROUP NEWS

At print time the Lincoln support group had not met.

## ALSA Meets with Drug Screening Consortium to Discuss Initial Research Results

*One Aim of Large-Scale Effort is to Identify FDA-Approved Drugs with Potential for Treating ALS*

(Calabasas Hills, CA) The ALS Association (ALSA) joined scientists, government representatives, and members of patient groups in Washington, D.C. April 7-8 to discuss the initial phase of an intensive, large-scale effort to identify FDA-approved compounds with potential for treating amyotrophic lateral sclerosis (ALS). Also included in this research effort is an exploration of treatment for Huntington's disease and other neurodegenerative diseases.

"This is an extremely exciting and unique collaborative effort with NINDS and other health organizations," said Lucie Bruijn, Ph.D., Science Director and Vice President, ALSA. "This effort has enabled us to identify several assays for ALS suitable for screening compounds and we are looking forward to seeing the data as it unfolds."

ALSA is sponsoring the drug-screening effort as part of the Lou Gehrig Challenge, a \$25 million research initiative to find a cure for ALS. Other consortium partners include the Hereditary Disease Foundation (HDF), the

Huntington's Disease Society of America (HDSA), and the National Institute of Neurological Disorders and Stroke (NINDS).

The initial phase of the \$1.3 million project took place over six months and involved 26 laboratories around the country. During this phase, investigators tested 1,040 compounds using 29 different assays, or tests, to identify their possible effects on cell death, protein aggregation, and other processes that have been linked to neurodegenerative diseases. Most of the compounds, or drugs, tested have been previously approved by the FDA for use in treating other disorders and diseases.

Participants in the meeting discussed their progress to date, plans for analyzing the resulting data, and future steps. More research is needed before any of the tested drugs can be considered for clinical trials, an important goal of the consortium.

To read the NINDS report on the Drug Screening meeting, visit [www.alsa.org](http://www.alsa.org).

## Drug Development and Clinical Trials

*Drug Development Update  
(As of November 20, 2001)*

Note: This document is prepared as a service for the ALS community and is intended as general information. Content used in this report is obtained from informed members of the pharmaceutical industry and the ALS community.

COMPANY OR CENTER	COMPOUND OR DRUG TRIAL	STATUS
Avanir Pharmaceuticals	AVP-923	Enrollment Closed
Northeast ALS Consortium	Celebrex	Enrollment Open
University of Wisconsin-Madison	Tamoxifen	Enrollment Open
Amgen and Guilford Pharmaceuticals, Inc.	Small molecule neurotrophic agents	Phase II Trial in process for Parkinsons Disease
Amgen-Regeneron Partnership	BDNF Trial-Intrathecal (IT)	All clinical development has been discontinued
Amgen-Regeneron Partnership	BDNF Subcutaneous	All clinical development has been discontinued
Aventis S.A.	Rilutek®	FDA approved drug currently available
The Carolinas Neuromuscular/ALS MDA Center	Oxandrolone	Now Enrolling
Cephalon	Myotrophin®	Enrolling Winter 2002
Eleanor and Lou Gehrig ALS Center at Columbia University	Pilot CoQ10	Enrollment is closed
Eleanor and Lou Gehrig ALS Center at Columbia University	Pilot CoQ10 with imaging	Enrollment began October 2001
Guilford Pharmaceuticals Inc.	NAALADase	Pre-clinical investigation phase
NeoTherapeutics, Inc.	NEOTROFIN™	Pre-clinical investigation phase in ALS
North Eastern ALS Consortium	Topiramate (Topamax)	Enrollment is closed
Parke-Davis	Gabapentin (Neurontin®)	Analysis of Phase III data completed and reported
Sanofi-Synthelabo Inc.	Xaliproden	Preliminary analysis released 9/5/00
University of New Mexico ALS Center	Minocycline Investigation	Enrolling Summer 2001
Beth Israel Medical Center	Indinavir	Enrollment began October 2001
Multicenter ALS	Buspiron Investigation	Currently Enrolling
North Eastern ALS Consortium	Creatine	Enrolling patients
The Carolinas Neuromuscular/ALS Center	Creatine	Enrolling patients
The West Virginia University School of Medicine	Creatine	Enrolling patients

## MORE RESEARCH SUPPORTS FINDINGS THAT MINOCYCLINE DELAYS PROGRESSION OF ALS

From ALSA's National Office

In a study published in the May issue of the scientific journal *Nature*, a team of investigators led by Robert M. Friedlander and Serge Przedborski found minocycline delays progression of ALS in a mouse model (SOD1/G93A) of ALS. Funded in part by The ALS Association, the study involving over a dozen researchers at six institutions found minocycline delays disease onset and extends survival in the ALS mice. (See *Nature*, Vol. 417, 2 May 2002, pps. 74–78)

Exhibiting a neuroprotective role in ALS, minocycline appears to interfere with cell death mechanism, in particular the activation of caspases -1 and -3, which are known to be activated in the neurons of ALS mice. Minocycline does not directly inhibit these caspases, rather it seems to inhibit a shared step in the cell death pathway by blocking the release of cytochrome c from the mitochondria (the cells responsible for cellular energy production).

The investigators in this study believe that understanding the mechanism of action of minocycline in ALS – what its primary target is – will assist in the development and testing of a novel therapy for ALS.

More evidence about the potential of minocycline or similar compound as a treatment for ALS is contained in the results of a Canadian study at McGill University of minocycline in an ALS mouse model, announced April 30, and being published in the June issue of *Neurobiology of Disease*. While the mechanism of how minocycline slowed disease progression was unclear,

the McGill study team saw marked reduction in inflammation in the brains of treated mice and sparing of motor axons.

"The laboratory research results of minocycline and ALS are encouraging," notes Paul Gordon, MD who directs the ALSA Center at the University of New Mexico. "However, we should exercise caution as these are the first two reported studies in animal models and more research is needed," Gordon adds.

### Human trials underway

The certified ALSA Center at the University of New Mexico is conducting a randomized, placebo-controlled safety and efficacy trial of minocycline for the treatment of ALS. The current study is fully enrolled. Study data and results are expected to be available in the fall of 2002. This small trial followed a five-patient open-label prospective protocol.

The certified ALSA Center at the Forbes Norris ALS Research Center in San Francisco is conducting a pilot study, dose ranging, placebo-controlled, crossover trial of minocycline. Dr. Robert Miller of the Forbes Norris ALS Research Center reports, "Twenty patients are enrolled in this study and the main focus is how well the drug is tolerated and its safety, but we are also gathering efficacy data." Results from this study are expected in the first quarter of 2003.

These will be the first studies to test the effect of minocycline in ALS patients. Any benefit from minocycline will have an impact on therapy for ALS and in the understanding of its pathogenesis.

### Questions and Answers:

**Question:** Will there be another clinical trial of minocycline in ALS?

**Response:** The ALS Association is quite hopeful that the encouraging laboratory reports of the last few days and the early small studies in New Mexico will lead to larger clinical trials of minocycline. Dr. Gordon states, "What we need is a large, multi-center, placebo-controlled definitive trial of minocycline in ALS."

**Question:** How can I find out about a future human study of minocycline in ALS and how can I enroll in this drug trial?

**Response:** Information about minocycline and all clinical drug studies in ALS can be found on ALSA's web site at [www.alsa.org](http://www.alsa.org). People who sign up to ALSA's Keep Me Informed service via the web site will be sent research and clinical bulletins through E-mail. Each clinical drug trial has its own enrollment criteria. Any future trial of minocycline will include enrollment criteria that ALSA will publish on its web site.

**Question:** Is minocycline available to people with ALS now and should it be taken for ALS?

**Response:** Although minocycline is a FDA approved drug, ALS is not a currently FDA-approved indication for minocycline. ALSA is not recommending that people with ALS take minocycline at this time outside of a clinical study. "The safety of minocycline has not yet been demonstrated in human ALS studies, and it is too early to say that this drug is effective in people with ALS," cautions Gordon.

## New in the ALS Library

SHARE THE CARE

This book by Cappy Capossela and Sheila Warnock offers a sensible and loving solution for those overwhelmed by the responsibilities of care giving. *Share The Care* describes a unique group approach that can turn a circle of ordinary people into a powerful caregiver team. *Share The Care* shows you how to:

- \* Create a caregiver "family" from friends, real family members, and acquaintances.
- \* Hold a meeting to organize your group, and introduce members to the *Share The Care* systems that guarantee every job will be done and no one person will have to do too much.
- \* Find the people who care, discover their hidden talents, make the most of their resources, cope with group issues, and stay together in the face of adversity.

## Memorials

Thanks to the following families for designating our Chapter for donations

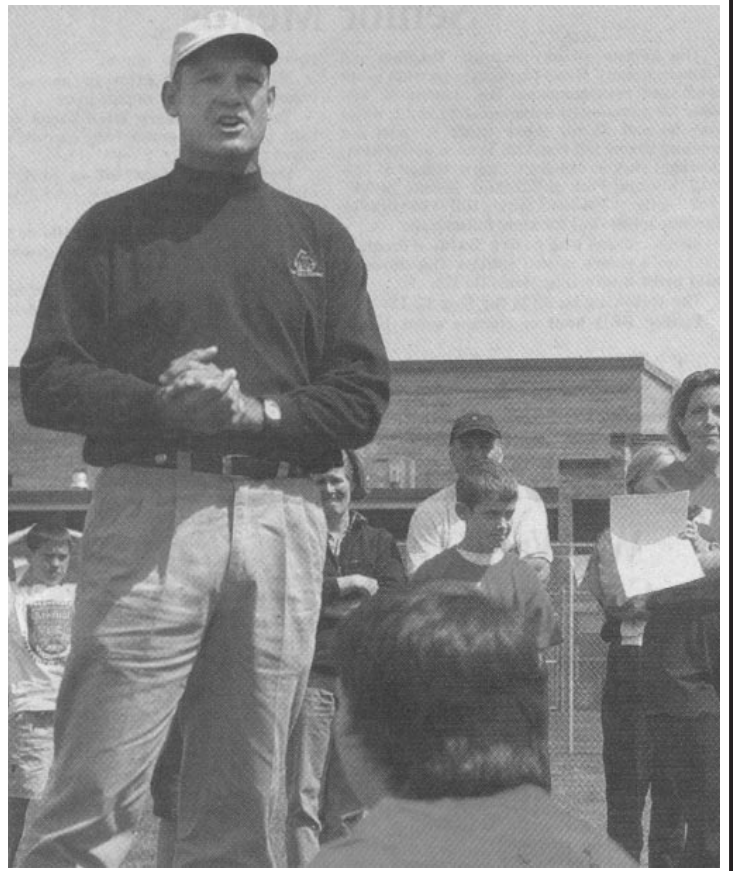
Harry Barth  
Nelda Sidebottom  
David Smith  
Donald Van Meter

## In Memorium

We send our sympathy and continued support to the families and friends of those who have recently died after battling ALS.

Nelda Sidebottom  
David Smith  
Donald Van Meter  
Nestor Villanueva (2-25-02)

**A**LS education, awareness and fund raising were in full swing at Indian Hills Middle School in Prairie Village, Kansas. Beginning with an all-school assembly on April 2, the kids learned about ALS, Lou Gehrig, Keith Worthington, the Chapter and George Brett. Then on Friday, April 26th, over \$1500 was raised for ALS at the Indian Hills Relays. George Brett attended the event and talked to the students about his involvement with the Chapter and his friendship with Keith Worthington.



## JUNE BIRTHDAYS

- |                    |         |
|--------------------|---------|
| Bill Grimm         | June 2  |
| Floyd Dever        | June 2  |
| Terry Olson        | June 4  |
| Dale Magnuson      | June 4  |
| Kay Nichols        | June 9  |
| John Simmons       | June 11 |
| Ruth Hughey        | June 11 |
| Tony McGrath       | June 13 |
| Bob Hohn           | June 14 |
| Elwood Leach       | June 14 |
| Gertrude Cundiff   | June 14 |
| Sam Williams       | June 19 |
| Blake Hanzlick     | June 22 |
| Paul Rose          | June 25 |
| Dick Spittles      | June 26 |
| Carl Walker        | June 29 |
| Marilyn Cunningham | June 29 |
| Pedro Guiao        | June 29 |



Order your Copy of  
*In Sunshine and in Shadow*  
TODAY!

Qty \_\_\_\_\_ x \$15.00 = \_\_\_\_\_  
S & H per book \$3.50 \_\_\_\_\_  
Total \_\_\_\_\_

NAME \_\_\_\_\_

ADDRESS \_\_\_\_\_

CITY \_\_\_\_\_ STATE \_\_\_\_\_ ZIP \_\_\_\_\_

HOME PHONE (\_\_\_\_) \_\_\_\_\_ WORK PHONE (\_\_\_\_) \_\_\_\_\_

Form of payment

Cash  Check  Visa  Mastercard

Name on credit card \_\_\_\_\_

Card Number \_\_\_\_\_

Exp. \_\_\_\_\_ Signature \_\_\_\_\_

Please mail order to  
ALS Association Keith Worthington Chapter,  
8340 Mission Road, Suite B4, Prairie Village, KS 66206  
or on our website with our secure online order form at  
[https://www.alsa-midwest.org/resources/bookorder\\_form.html](https://www.alsa-midwest.org/resources/bookorder_form.html)

**19<sup>th</sup> ANNUAL  
GEORGE BRETT CELEBRITY GOLF TOURNAMENT**  
**MONDAY, AUGUST 12<sup>TH</sup>**  
**MILBURN COUNTRY CLUB**  
**OVERLAND PARK, KANSAS**

This year the fun begins on Sunday night, August 11th with the Pairings Party at Old Ballgame Training Academy.  
♦Participate in friendly athletic competition, win prizes through raffles and enjoy food and beverages.

On Monday, the day kicks off with 32 five-person teams playing in a shotgun start, scramble format.

**SPONSORSHIPS AVAILABLE!**

For Sponsorship and Team Information  
Contact Kristine at 913.648.2062 or ktarwater@alsa-midwest.org

**The Bob Hohn Celebrity Golf Tournament**



Monday, June 17  
Quarry Oaks Golf Course in Omaha  
Sponsorships Available

- ♦Hosted by Frank & Pam Solich
- ♦Enjoy a day on the green with former Nebraska football players and other celebrities!
- ♦Play 18 holes
- ♦Enjoy contest and activities throughout the day
- ♦Mingle with your favorite celebrities

For Sponsorship and Team Information  
contact Ric Miller at (402)991-8788 or  
rmiller@alsa-midwest.org

**FOR SALE**

**1992 Dodge Conversion Van**, Power locks and windows, Ricon lift. 10,500 miles, Call Pat 816-567-4200

**1989 Dodge Caravan**, 61K, handicap equipped with rear entry ramp and hand driving controls, \$5,500 obo. Call 913-782-6756

**2002 Jazzy 1113 Sip & Puff Power Chair**, tilt back control, red. Never used. Original price \$17,000, will negotiate. Call Linda at 913-334-2476

**Dodge 1999 conversion van**, RAM 1500, w/ wheelchair lift and lock. 11k miles, perfect and loaded. Appt only, 913-469-4188

**Ranger 2 electric wheelchair**, fully adjustable. As new. Appt only 913-469-4188

**Invacare all electric, tilt wheelchair**, red with removable ventilator shelf, lap tray, battery included, roho cushion, Best offer, Call 918-337-3577

**Invacare manual wheelchair**, black with roho cushion, barely used, \$300. Call 918-331-3577

**Invacare Power Rolls Arrow Xt**, Joy stick, indoor/outdoor modes, deluxe padded automotive style seat with pivot arms for easy transfer, battery charger included. Excellent condition, Best Offer, Jefferson City Area. 573-636-2550 or email sjsiebold@mchsi.com.

**Rascal 200 Three-Wheeled Scooter**, red, slightly used. Swivel seat and flip up armrests. Battery operated. Retailer new for \$1500. Asking price \$600 or best offer. Inquiries may call (913)341-5174.

**Bruno Power Chair - PWC 2300**, 350 pound weight capacity, drop down controller, long trailing arm

suspension, carry-along charger, 90 degree swivel seat and adjustable armrests, security key lock system, tote pouch, curb climbing height: 1:25", turning radius: 22", speed up range up to 3.5 mph. Operators manual included purchased new for \$6,000.00, used for only 3 month months. Asking \$4,000.00, contact Jeff Blair at 402- 614-5516

**1997 Ford Pinnacle Motor Home**, Ford F53 Chassi V8 7.5 liter gas engine, double rear end axle, new batteries, good generator, 22,250 miles, 33 ft. long. Blue interior with queen size bed. Call Chuck after 6 p.m. @ 785-459-2281.

**Quickie II**, adult, lightweight (27 lbs) titanium wheelchair in good condition with padded, swing-away arm rests, 8" pneumatic casters for easy ride on rough surfaces, 24" rear wheels with wheel locks and aluminum hand rims; 17" frame width, medium backrest with 8 degree bend and rear anti-tip tubes. The Jay seat, lumbar support and foot pedals easily disassemble for easy transport. Only used 10 months. Purchase price was \$1,784 (reduced from \$2,095). Sale price is negotiable. Call 573-445-2451 (Columbia MO area).

**Handicapped equipped 79 Chevrolet van**, 34,000 original miles, Ricon rear lift, \$2000. Please call for details. 913-789-8451 or email maryc@kcnet.com

**New electric wheelchair**, Model 9000 Action Power, complete with two batteries and charger. Includes Owner's Operation and Maintenance Manual. Call: 816-246-7761 or 816-564-4841.

**Hospital bed, Serenity Home Care Bed by Medline**. 2 years old. Used only one year. Semi-electric. Paid \$1800, asking \$500. Call Wendy 913-371-2238.

**1997 Ford Econoline 150** custom van with raised roof and new side entry Ricon wheelchair lift (\$5000). 26,000 miles. Loaded, new tires, TV, and 4 wheelchair lockdown units. Like new condition, engine well maintained. See to appreciate. \$20,000. Call 816-822-8274.

**1998 Elec. Wheelchair Invacare Action Ranger II Storm Series**, Loaded with Jell seat, Remote Programmer, Joystick/Switches/ Indicator, Anti-Tippers, adjustable High Back/Headrest Recliner, standard and deluxe foot/leg rests, mirrors and other add-ons. Excellent Condition. Also 2 Battery Chargers, 1 used 24 volt, Action-Model18350 Invacare and one new/unused 24 volt dual mode automatic, Lester Electrical, Model-18350. Manuals included. Best Offer. Call: 785-272-3349 (Topeka area)

**1997 Power Wheelchair, Everest & Jennings**, Joystick control, new seat, clean and in great working condition. Small & compact to go through most doorways as well as tight spots in bathrooms, etc., yet large enough to handle most people. Includes batteries & charger. Arm rests can pivot or remove for transfers, swing out foot rests. \$1900.00 new. Asking \$350.00. Includes books & operating instructions. Call 816-373-2215.

**1998 Power Wheelchair, Everest & Jennings**, Joystick control, like new condition. \$2,500 new. Asking \$900.00. Used approximately 6 months. Small & compact. Includes new batteries and charger. Arm rests pivot or remove and foot rests swing out. Call 816-257-0641.

INCLUSION IN THE DIALOG IS NOT AN ENDORSEMENT FOR THESE PRODUCTS AND SERVICES



**EMAIL ADDRESSES TO BETTER SERVE YOU:**

**Beckie Cooper**  
Executive Director  
bcooper@alsa-midwest.org

**Sally Dwyer**  
Program Director  
sdwyer@alsa-midwest.org

**Dawn Oliver**  
Development  
doliver@alsa-midwest.org

**Terry Betzelberger**  
President  
info@alsa-midwest.org

**Patient Services**  
Kansas City-

**Sarah Tucker**  
stucker@alsa-midwest.org  
**Nancy Lindquist**  
nlindquist@alsa-midwest.org  
**Linnea Brandt**  
lbrandt@alsa-midwest.org

Springfield

**Betty Bruce**  
bbruce@alsa-midwest.org

Wichita-

**Jean Haley**  
jhaley@alsa-midwest.org

**Fundraising**

Kansas City-

**Mary Ann Crew**  
mcrew@alsa-midwest.org  
**Emily Marsh**  
emarsh@alsa-midwest.org  
**Merritt McShane**  
msloan@alsa-midwest.org  
**Kristine Tarwater**  
ktarwater@alsa-midwest.org

Springfield

**Kim Goble**  
kgoble@alsa-midwest.org

Wichita-

**Kathleen Wille**  
kwille@alsa-midwest.org

Omaha

**Ric Miller**  
rmiller@alsa-midwest.org

**Chapter Website**  
www.alsa-midwest.org  
**National Website**  
www.alsa.org

# THE DIALOG

Keith Worthington Chapter  
8340 Mission Rd. Suite B-4  
Prairie Village, KS 66206

Non Profit Org.  
U.S. Postage  
**PAID**  
Shawnee Mission, KS  
Permit No. 1249

Address Service Requested

## 8 • The Dialog

J  
U  
N  
E  
2  
0  
0  
2

- |    |      |  |    |      |  |
|----|------|--|----|------|--|
| 4  | Tues | <b>Kansas City Support Group</b> 7 - 8:30 pm<br>Second Presbyterian Church, 55th & Oak<br>Terry Betzelberger will recap the<br>National Conference | 18 | Tues | <b>Springfield Support Group</b> 7pm<br>Springfield ALS Office<br>1447 - F S. Enterprise<br>(417) 886-5003 or (888) 386-1200 (toll free)<br>A Cox Sleep Disorder Clinic Representative will<br>discuss the benefits of BiPAP.      |
| 5  | Wed  | <b>Hutchinson Support Group</b> 2 pm<br>Grace Episcopal Church, 20th & Main  | 19 | Wed  | <b>KC Day Support Group</b> 2 - 3:30 pm<br>Village Presbyterian Church<br>6641 Mission Rd. Prairie Village, Kansas   |
| 6  | Thu  | <b>Wichita Support Group</b> 7 pm<br>Grace Presbyterian Church<br>5002 E Douglas   | 24 | Mon  | <b>Topeka Support Group</b> 7pm<br>Topeka Assoc. for Retarded Citizens<br>2701 SW Randolph, Topeka,KS<br><br><b>Lincoln Support Group</b><br>Next Meeting 7/24<br><br><b>Jefferson City Support Group</b><br>No meeting this month |
| 13 | Thu  | <b>Omaha Support Group</b> 7pm<br>St. Pius Parish Center<br>6905 Blondo Street, Omaha, NE  |    |      |  |
| 14 | Fri  | <b>KC Caregiver Support Group</b> 12:30 -1:30 pm<br>ALS Office<br>8340 Mission Rd. B4, Prairie Village, Kansas<br><b>Must RSVP!</b> (913) 648-2062 |    |      |  |
- “What is ALS” Orientation Series  
By appointment. Please call (913) 648-2062

THE CHAPTER SERVES KANSAS, NEBRASKA, AND WESTERN/CENTRAL MISSOURI

With Offices in the Following Cities, Contact the Office Nearest You!

**Kansas City/Nebraska**  
Linnea Brandt & Nancy Lindquist  
**(800) 878-2062**

**Wichita**  
Jean Haley  
**(800) 553-9056**

**Springfield**  
Betty Bruce  
**(888) 386-1200**