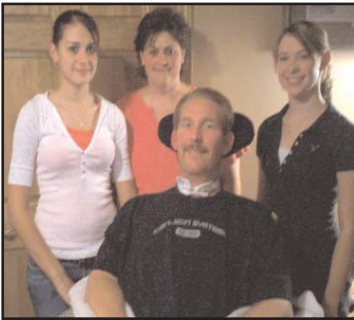


# ALS

Volume X

Issue 1

## Living with ALS: Dan Spiering



My name is Dan Spiering, and I am 41 years old. I am married to my wonderful wife, Michelle, who is my full-time caregiver. We have two daughters, Destiny, 17, and Brooke, 15.

I worked at Lincoln Cold Storage for 13 years and had just finished one year at BNSF in Lincoln when I was diagnosed with ALS. The support from my coworkers at BNSF was incredible when I was diagnosed and had to quit working.

I called my wife in April [2006] and told her that I had a limp going on with my right leg and that she needed to make me a doctor's appointment because something was wrong. She got me into our family doctor, and he suggested we get some testing done. He scheduled an MRI and also made an appointment for us with the neurologist. It was over a month before we could get into the neurologist.

At the end of May, we finally went to the neurologist, and the doctor told me that it looked like I may have a motor neuron disease. He wanted us to make another appointment to see one of his partners who specialized in this disease. In June we went back to see the other neurologist, and he scheduled some CAT scans and other tests to be done before he could diagnose me. On July 14, we went back again to go over all the test results and he told me I have ALS, also known as Lou Gehrig's Disease. Our neurologist had also set up an appointment for us at Mayo Clinic so that we could have a second opinion. We went to Mayo on July 28, 2006, and this is when they confirmed my diagnosis.

When the doctor told me I had ALS, I was [angry]. How could this happen to me? The ride home with my wife on July 14 was the longest, quietest ride home I have ever had. I don't think my wife knew who Lou Gehrig was, so this was not sinking in for her like it was for me. I had just gotten on with the railroad and loved my job. Things had been going so well for me and my family. I knew what Lou Gehrig's Disease was, and it scared me to death to think about what was going to happen to me. I lost my mother when I was 13 and I could not think about my daughters losing their father at a young age.

*Continued on page 2*

“  
**My girls are my  
 inspiration to  
 keep fighting  
 this  
 disease.**  
 ”

**The Keith Worthington Chapter Celebrates 30 Years!**  
**See page 4 for details.**

*Continued from page 1*

ALS has affected my life in so many different ways. I think the hardest thing is not being able to do anything for myself anymore. I have always been the fix-it man around the house, and I use to fish and hunt all the time. For me to now be 100% dependent on my wife has been really hard. But I just live each day to the fullest and take it one day at a time. I have good days and bad days, but I try to keep a smile on my face as much as I can. My girls are my inspiration to keep fighting this disease. I want to make it to see both of them graduate from high school.

My wife had been doing lots of research on the internet when she found the Keith Worthington Chapter of The ALS Association. She was looking for as many resources as possible and contacted them. Everyone in the Omaha office has been absolutely wonderful and has helped us so much. I needed a manual wheelchair so I called them. They had one in their loan closet, and they brought it out to us right away. For anything we need, we can call Shannon and know that she will help us get what we need or lead us in the right direction. Shannon comes out to check on me to see how I am doing and is always asking if there is anything we need or anything she can do for us.

This fall, I am participating in Walk to Defeat ALS™ to help raise money to find a cure and treatments for this disease. It is a horrible disease and the more awareness we can get out there, the better it will be for patients who are newly diagnosed. This disease is affecting so many people of all ages. I want to stay involved as much as possible and maybe we can find a cure for this disease.

---

## From Pete Story, Chapter President

**This year the Keith Worthington Chapter celebrates 30 years of fighting ALS!**

My involvement with the Chapter began 20 years ago, in 1988, at the urging of a good friend who lost his father to ALS. In 2007, I began serving as president of the Chapter; and like the 9 individuals who served before me, I have seen first hand the Chapter's extensive efforts to improve the lives of individuals and families currently living with this dreaded disease.

Each month:

- The Chapter's Service Coordinators make an average of 432 contacts to patients, caregivers, and their families, either in their home, by phone, email or at clinic and support group meetings.
- The Chapter facilitates support groups held throughout the tri-state service area - an average of 13 each month.
- An average of 27 patients is seen at the ALS Center of Excellence at KU Medical Center by a multi-discipline team of health care professionals.
- An average of 400 medical and communication equipment items are on loan to individuals to help maximize their mobility and communication needs.
- The Chapter staff professionals provide education and raise awareness through in-services, civic group presentations and health fairs.
- The Chapter mails/emails a monthly newsletter to over 3300 individuals.

In addition to these programs and services, the Chapter continues to encourage, support and fund worldwide research that will one day find a cure and treatment for ALS.

We are blessed to have a dedicated professional staff who work tirelessly to provide the above.

We fund these services with money raised by:

- Our annual " Walks to Defeat ALS" held in cities across our service area
- Night of Hope event in Kansas City
- Golf tournaments in Kansas City and Wichita and Casino Night in Springfield
- Various grants and 3rd party events
- Donations from folks in the communities we serve

We are constantly looking for new means to raise revenues and I encourage you to help us reach out to your friends and family to join our cause.

For more information on how to help please contact Eileen Brown at the Kansas City office, her phone number is 913-648-2062 Ext. 209, her email address is [ebrown@alsa-midwest.org](mailto:ebrown@alsa-midwest.org)

**As we celebrate our 30th year, we continue the fight!**

---

## Research Study on Quality of Life in People with ALS

Researchers at Penn State College of Medicine are seeking participants for a research study on Quality of Life (QOL) and ALS. The purpose of the study is to better understand the QOL of patients with ALS who receive different forms of care for the disease. Participants will complete a questionnaire (online or with a paper & pencil version) that asks questions about physical health status, quality of life, and use of medical services for care of ALS. Survey responses are confidential. All persons who have been diagnosed with ALS are eligible to participate in this study.

To access the online questionnaire, go to our ALS Clinic website: [www.alsphiladelphia.org/pennstatehershey](http://www.alsphiladelphia.org/pennstatehershey) Click on the link that reads: New! Persons with Amyotrophic Lateral Sclerosis (ALS) Wanted for a Research Study. For more information or to request a paper copy of the questionnaire call the study coordinator, Beth Stephens at 717-531-0003, ext. 283395 or by email at [hstephens1@psu.edu](mailto:hstephens1@psu.edu). The Study Director is Zachary Simmons, MD, Department of Neurology, Penn State College of Medicine. This research study has been approved by the Institutional Review Board, under federal regulations at Penn State College of Medicine, Penn State Hershey Medical Center.

# ALS Research

The following research information is from The ALS Association web site - [www.alsa.org](http://www.alsa.org). Additional information on the main research and sub research areas is provided through the website links. However, this information, starting with Clinical Trials (see below), will also appear in future issues of Dialog.

## Clinical Trials

### Overview Summary

Clinical trials carry out tests on people to see whether a candidate therapy is safe and works to counter the effects of a disease. Before human patients are the subjects, therapy is tested in cells or tissue grown in the lab, and then in animals, to provide the best possible assurance that a drug will be safe for people to take.

A pilot trial is a very first look at a candidate therapeutic in people. Phase I testing looks at the safety of a candidate treatment, often in twenty or fewer people. Participants are examined for any adverse reactions or side effects. If any appear that are judged to be too dangerous, testing is halted and the drug will not advance any further in the clinical trials process.

Phase II testing attempts to determine the optimal dose, route (by mouth, by injection) and timing

of doses of the candidate treatment. Information about a drug's ability to help in the disease may be obtained in the course of Phase II testing, but such findings are not able to reliably predict a candidate's effect. Usually less than a hundred patients are involved.

The therapeutic effect of the candidate is specifically sought in Phase III testing. This is the stage of testing that enrolls enough patients to allow a statistical judgment that a treatment is effective. Phase III trials usually require hundreds to thousands of participants.

Due to requirements for producing reliable data, patients may have to be of a certain age, gender, stage of disease, or even race, to participate. For ALS, restrictions are often looser to participate in clinical trials than for other conditions that are not so devastating or rapidly fatal. Nevertheless, ALS patients in clinical trials are required to fulfill certain criteria of the disease or disease severity ("Inclusion criteria"), and might be ineligible if they show certain other characteristics ("Exclusion criteria").

Clinical trials can only test relatively few patients, and must make predictions from a few people that will most likely hold for the patient population as a whole. Statistics provide the means to judge if a change induced by drug treatment is likely to be a real, reproducible change, and that what doctors see in a restricted set of patients is likely to hold true for the entire population of patients with that disease.

The placebo effect is well known in medicine as a temporary improvement in pain or other symptoms of a disease that follows a fake pill. It is a real effect. But it is not due to the active properties of a drug. So testing of any new treatment must insure that the effect is due to the drug and not to the power of positive thinking, or to the extra attention from the medical staff that comes with participation in a clinical trial.

Fluctuations in disease progression are documented for many illnesses including ALS. Simple hope that a new treatment will work can color expectations and perceptions. A patient's speech can appear clearer. A patient can gather strength to sit up unassisted or take a few steps unaided. Decline in abilities can slow or plateau. These are real effects of positive thinking. A control group helps to balance effects of the mind against effects of a drug.

A benefit to participating in a clinical trial is that the questions answered can benefit all patients with the disease. Even if a candidate treatment fails to hold promise, the results of any clinical trial give new insight and direction to those working to solve the disorder.

Main Research Area	Sub Research Area
<u>Clinical Trials</u>	
<u>Disease Process of ALS</u>	<u>Axon Structure and Dynamics</u>
	<u>Cell Death and Apoptosis</u>
	<u>Cognitive Changes with ALS [Frontotemporal Dementia]</u>
	<u>Glutamate</u>
	<u>Inflammation</u>
	<u>Mitochondria</u>
	<u>SOD1 and ALS (copper zinc superoxide dismutase 1)</u>
<u>Environmental Factors</u>	
<u>Genetics of ALS</u>	
<u>Laboratory Models of ALS</u>	
<u>Therapies for ALS</u>	<u>Cell Targets</u>
	<u>Gene Therapy</u>
	<u>RNA Therapy</u>
	<u>Stem Cells</u>
	<u>Trophic Factors</u>
	<u>Biomarkers</u>



## Call for email addresses!

When the Keith Worthington Chapter started in 1978, information to patients/families/friends was given through visits, mail and phone.

TODAY, with the advancements of technology, information can often be disseminated through email - quickly and easily.


To do this, we need YOUR email addresses!

Please send an email to Laura at [lball@alsa-midwest.org](mailto:lball@alsa-midwest.org) with your name, home address and email address.

*Email addresses will remain the sole property of the Keith Worthington Chapter.*

## The Keith Worthington Chapter Celebrates 30-Year Anniversary

F E B R U A R Y 2 0 0 8



**Keith Worthington Chapter**  
1978 30<sup>th</sup> Anniversary 2008

A lot has happened in 30 years!  
From a 1978 support group in Keith Worthington's living room to:

- Ongoing patient and family consultations
- An ALS Association Center of Excellence: a clinic and research center partnership with KU Medical Center
- 15 Chapter-sponsored support groups
- In-service training for medical professionals, service providers, and caregivers
- Loan of durable medical and communication equipment
- Online library of helpful information and educational materials
- Monthly newsletter and website
- Participation in The ALS Association's advocacy and research programs

### 30 Years - 30 Stories - 30 Reasons to Hope!

*Through the eyes of a few, many are inspired.*

#### Keith Worthington Chapter, 1978-2008

##### Call for Stories:

In recognition of the 30th anniversary of the Keith Worthington Chapter, we'd like to recognize and promote 30 of your personal stories to help spread the word about ALS and raise awareness of the important programs and services this chapter offers. While we know 30 stories will only represent a fraction of the stories of people living with ALS in Kansas, Nebraska and Western/Central Missouri, we know that by highlighting 30 stories from 30 very different people, we'll be able to bring new attention to ALS in this, our 30th year. The final stories will be posted on our web site and featured in promotional and press materials throughout 2008, and you may be asked to participate in media interviews in your area. If you'd like your story to be considered, please send us the following information by the end of February. For more information, call Sally Dywer at 913-648-2062.

- Name
- Age
- Date of diagnosis
- Hobbies
- A little about your family (spouse, kids, grandkids...)
- Answer the following question in 100 words or less: How has ALS affected your life?

### Upcoming 2008 Events

*Mark Your Calendars*

**Casino Night, Springfield** - April 4, 2008

**Night of Hope, KC** - May 3, 2008

**Joe McGuff ALS Golf Classic, KC** - May 19, 2008

**Kerry Gray ALS Pro/Am, Wichita** - June 22/23, 2008

**Flint Oak, Wichita** - Fall 2008

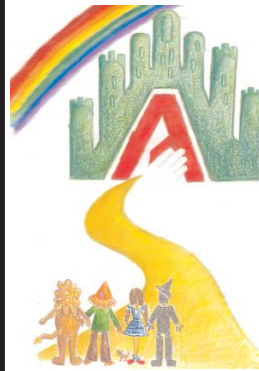
**Walk to D'Feet ALS** - Walks held in August, September and October throughout the service area.

### Somewhere Over the Rainbow

**Night of Hope 2008**

**May 3, 2008 at the Overland Park Sheraton**

**Table for 10 \$1000/ Ticket for 1 \$100**



Don't miss out on an evening of delicious food, entertainment and touching inspiration. Join us in recognizing those who make our work possible and to hear from our keynote speaker, Noah ben Shea, poet laureate for The ALS Association.

Reserve your table or seat today. Sponsorship opportunities are also available. For more information, contact Laura at 913-648-2062.

#### Joe McGuff ALS Golf Classic

May 19th, 2008

Nicklaus Golf Club at LionsGate

Celebrities: George Brett and Tom Watson

For information, contact Kristin at 913-648-2062.

#### Kerry Gray ALS Pro-Am

June 22/23, 2008

Wichita Country Club

For information, contact Colleen at 913-648-2062

**Congress Passes Legislation for Additional \$3 million in funding for ALS Registry**

Prior to adjourning for the year, The ALS Association secured a tremendous victory as Congress passed legislation to provide an additional \$3 million in funding for the ALS registry at the Centers for Disease Control and Prevention. The funding builds upon and expands the pilot projects already underway at the CDC and represents a \$2 million increase over last year. This is a great accomplishment considering that it comes during a year when most other health programs were cut or received little or no additional funding.

The registry funding was included in the omnibus appropriations bill, which is expected to be signed into law by the President. To date, Congress has provided nearly \$5 million to support ALS registry projects that are evaluating the science to guide the creation of a

national ALS patient registry.

Additional information about the pilot projects is available at [http://www.capwiz.com/alsa/attachments/1\\_Registry\\_Initiatives\\_Adv\\_Update\\_12\\_07\\_.pdf](http://www.capwiz.com/alsa/attachments/1_Registry_Initiatives_Adv_Update_12_07_.pdf).

Congress will reconvene in January to begin the second session of the 110th Congress and we will continue to urge the Senate to pass the ALS Registry Act (S. 1382) as soon as possible upon their return. Because each Congress lasts for a period of two years, the bill does not have to be reintroduced and we can continue to build on the progress that was achieved this year when the House of Representatives passed the ALS Registry Act and the measure also was passed by the Senate Health, Education, Labor and Pensions Committee.

In the meantime, we would like to thank ALS Association Chapters and individual advocates for their continued efforts. Together, we are making a difference!



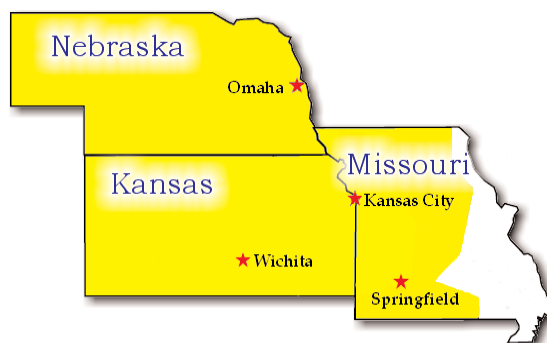
**ANNOUNCING -**  
**The ALS Association's 2008**  
**National ALS Advocacy Day and Public Policy Conference**  
 Sunday, May 11 - Tuesday, May 13  
 Renaissance Washington, DC Hotel  
 999 9th Street, NW  
 Washington DC 20001

For additional information, please call the Capital Office of The ALS Association toll-free at 1-877-444-ALSA, or visit The ALS Association Web site at [www.alsa.org/policy](http://www.alsa.org/policy)

The Keith Worthington Chapter will be active in the fight against ALS through it's program of on-going advocacy. Visits to the numerous district offices of Kansas, Nebraska and Missouri Senators and Representatives will be scheduled throughout the year.

If you are interested in joining the Chapter in this effort, please contact Sally Dwyer, Program Director, 913.648.2062 or email [sdwyer@alsa-midwest.org](mailto:sdwyer@alsa-midwest.org)

**The ALS Association**  
**Keith Worthington Chapter**



**3rd Annual ALS Vegas Vacation**  
**Casino Night & Auction**



When: Friday, April 4, 2008 7 p.m. to Midnight  
 Where: Oasis Inn & Convention Center, Springfield, MO  
 Cost: \$50 per person in advance, \$60 at the door and \$500 for a table of 8

The fun begins at 7:00 pm with an open buffet, music and entertainment, and a chance to mingle. An opening ceremony to introduce local people with ALS, corporate sponsors, and the Chapter's mission will be followed by an evening of great gaming and an exciting silent auction. The end of the evening will bring even more excitement with a live auction and a drawing for raffle prizes-including a trip to Las Vegas! For more information or to volunteer, please contact Mindy Wallace, at 888-386-1200 or [mwallace@alsa-midwest.org](mailto:mwallace@alsa-midwest.org).

## Circles of Giving

F E B R U A R Y 2 0 0 8

We have been very gratified by the response to our Circles of Giving program. For those that may not be familiar with this giving opportunity, Circles of Giving recognizes those that have made a current gift or multi-year pledge to the Chapter at or above certain amounts. While all contributions are significant and vital to the Chapter's ability to continue to deliver much needed services, these gifts are at a level that warrant special recognition.

Multi-year pledges provide what is called sustaining support. Knowing a donor's commitment to contribute at a certain level each year assists the Chapter in planning for the future. While we realize that all donors are not in a position to make this kind of commitment, we want to share the levels of recognition in our Circles of Giving. Members will be recognized at our Night of Hope event in May and in a future issue of Dialog.

If you are interested in more information or receiving a pledge form, please contact Eileen Brown at the Chapter at 913-648-2062 or [ebrown@alsa-midwest.org](mailto:ebrown@alsa-midwest.org). Please note that all pledges are payable over no more than a 5-year period in equal annual installments.

### Levels of Recognition

Circle of Friends \$2,500	Circle of Courage \$25,000
Circle of Spirit \$5,000	Circle of Strength \$50,000
Circle of Community \$10,000	Circle of Hope \$100,000
Circle of Dedication \$15,000	Circle of Life Commitments Over \$100,000

Is your company looking for a way to shine in the community? Look no further – Walk to Defeat ALS™ offers opportunities to become a corporate sponsor and/or form a corporate team. Improve teamwork, increase employee morale and help out a wonderful cause! For more information or to find a walk in your community, please contact:

Kansas City Kristin Spence (913) 648-2062 <a href="mailto:kspence@alsa-midwest.org">kspence@alsa-midwest.org</a>	Nebraska Sherrie Hanneman (402) 991-8788 <a href="mailto:shanneman@alsa-midwest.org">shanneman@alsa-midwest.org</a>	Central/Soutwest Missouri Mindy Wallace (417) 886-5003 <a href="mailto:mwallace@alsa-midwest.org">mwallace@alsa-midwest.org</a>	Wichita Colleen Wachter (913) 648-2062 <a href="mailto:cwachter@alsa-midwest.org">cwachter@alsa-midwest.org</a>
---	--	--	--



### Programs & Services Update

(from the December 2007 report)

	In December 2007	Fiscal Year to Date
New patients	4	121
Number of patients who have died	9	100
Consultations made by Service Coordinators	373	4,751
Number of clinics held	3	39
Patients attending clinic	12	300
Number of support group meetings	9	159
Patients attending support group meetings	35	310
Total number attending support group meetings	405	1,792
Number of equipment items on loan	376	n/a



### In Memoriam

We send our sympathy and support to the families and friends of those who have recently died after battling ALS.

Albert Agoitia	Dennis Mitchell	Tom Schmidt
Joann Comer	Jack Randle	Melvin Smith
Mary Lou King	George Renault	Venita Smith
Rudolph Kurz	Melva Schaufler	Sean Younger

### Memorials

Thank you to the families of the following for designating our Chapter for donations:

Albert Agoitia	George Renault
Mary Lou King	Melva Schaufler
Dennis Mitchell	Sean Younger
Jack Randle	

## EQUIPMENT EXCHANGE

## ITEMS FOR SALE

## VANS

**1999 Ford Econoline Conversion Van.** Has lift and many extras. 86,000 miles. \$10,500. Call Bruce at 402-291-1697.

**1998 Ford Windstar.** 52,000 mi. New carpet. \$20,000. Call Daphne at 417-844-4814.

**2006 Toyota Van.** Dark blue, excellent condition, only 1,700 miles with Braun Lift and Easy Lock tie-down system. Asking \$40,000. Call Wayne Ryherd at 620-365-5485 and leave message. All calls returned.

**1992 Chevrolet G20 Van.** Has Braun lift. 90,000+ miles. \$4000. Call Sherrie at 816-884-3071.

**2003 Dodge Grand Caravan,** Rampvan. Perfect condition, 98,000 miles, new tires, new rear shocks, serviced Feb 06, asking \$26,000. Call 888-386-1200 or e-mail djmathis1@alltel.net for details.

**1995 Ford Econoline 150 full-size van.** Leather interior, Braun lift, 113,000 miles. Call Pam Garcia 402-345-0879 or 402-917-6478 (cell).

**'98 Dodge Grand Caravan.** 72K, Lowered floor with ramp and tie downs. New brakes and tires. Clean and excellent condition. \$14,500.00. Call Rosie Anderson, 913.205.2848

**1991 Chevy conversion Van.** Handicap accessible. Ricon platform lift. Excellent condition. \$6000. Call Joann Rand at 417-753-3282.

## WHEELCHAIRS

**ALL POWER Permobil wheelchair.** Slightly used (approximately 6 months). Some surface scratches, otherwise in perfect shape. Asking \$2,500. 816-377-4351.

**Permobil C300 Wheelchair.** 6 mos. old. \$7,000. Call Daphne at 417-844-4814.

**InvaCare Chairman Power Wheelchair.** Incl. ventilator tray, head controls. Like new, used only 5 times. \$6,299 or best offer. Call Fernando 816-213-0607.

**M91 Power Wheelchair.** Flat Free tires. EX controller, Swingaway foot rest, 22 ML gel batteries. Purchased 2004 for \$6,450. Asking \$2,500. Call Eileen Otto at 913-888-9998.

**InvaCare Storm Series TDX4 Power Wheelchair.** Storm Series TDX4 incl Formula Invisible Super Low Tilt, tilt/recline/elevate, Formula PTO Plus & joystick controller. 2 yrs old. Pickup or delivery available in Springfield/ Joplin. List price \$10,305; asking \$6,200. Call Francine 636.530.6001.

**Quantam 600 series power chair.** Reclines to lay down with legs up. Call Pam Garcia 402-345-0879 or 402-917-6478 (cell).

**Reclining Quickie Wheelchair** with headrest, elevating leg rests, removable arm rests, gel cushioned seat. Contact Angela at (620)763-2621 or angela@cck.net.

**Hoveround power chair w/battery pack and charger.** Excellent condition. \$1550. Call Melvin 913-498-3129.

**Wheelchair,** sized for a woman. Excellent condition. \$125. Call Melvin 913-498-3129.

**Like new Merit Red Power Wheel Chair** with large rear wheels. Model #2005. Asking price \$23,000.00. Used only a few times. Call: Mrs. J. J. Wyatt 316/207-8186 or Pamela Rayer 316/721-0939.

**Wheelchair,** Permobil C300. Reclines, Joystick. \$6500. Call Linda at 816-238-3991

## PLATFORM LIFTS

**Access Industries Indoor/Outdoor Vertical Platform Lift,** Model PLS 96. Used little 750 lbs. capacity. \$5,500 - . Call (314) 374-4480.

**InvaCare Reliant Stand-Up Lift w/sling.** 24 VDC rechargeable battery, weight capacity = 350 lbs. Purchased in 2004 for \$3,400. Asking \$1,500. Call Eileen at 913-888-9998.

## MISCELLANEOUS

**STAIR GLIDE** and seat for 7 steps. Straight access. Can be mounted to steps or wall. Call 913-712-8657 or 952-457-1520. Will donate.

**E-Z STAND,** 5000 series. Brand new - valued at \$5000. Asking \$1,500. Call Michelle 402-994-2204.

**INVACARE HOSPITAL BED.** Full electric hospital bed, 88" x 36". Split springs to ends. \$1,000. Call Eileen at 913-888-9998.

**DYNAVOX Series 4.** Less than 1 year old. Stand included. Asking \$2,200. Call Daphne at 41-44-414.

**SCOOTER,** Pride Shuttle Mobility Scooter, variable speed control; 2 batteries, 110v built-in charger; baskets. Good condition. \$550.00 Call Sharon (417) 276-3363.

**SCOOTER LIFT.** Bruno electric swing arm scooter lift. \$550.00 (Installation not incl.) Call Sharon (417) 276-3363.

**CHAIR GLIDE,** Summit Stairway, installed Nov. 2006. Straight stairway. Incl. all paperwork and instructions. New \$2926, asking \$1900. Please call Chelly 913-661-0374.

**LIFT CHAIR,** beige power recliner, excellent condition. \$550. Call Melvin at 913-498-3129.

**DYNAVOX** with carrying case. Like new - purchased in 2005. \$6,000 or best offer. Please call Audra Youman 308-632-8984.

**SCOOTER CHAIR.** Never used. Pd \$6,000, asking \$3,500. Call Darlene 402-352-2083.

**LIFT SYSTEM** Sure-Hands Patient Lift System w/ 3-room access. \$7000 or reasonable offer. Contact Marilyn Gray (316) 831-0123.

**WHEELCHAIR TUB BASE.** 30x60 Barrier Free. Only used twice. Cost \$515, asking \$200. Please call George 816-461-0980.

**SHOWER CHAIR PVC.** Call Pam Garcia 402-345-0879 or 402-917-6478 (cell).

## SEVERAL ITEMS AVAILABLE:

- Sure Hands lift system, \$6,000
  - Deluxe Wheelchair - \$12,000
  - Portable commode chairs, walkers, plastic ankle supports, size large
- Call Margie Lafevers 870-424-6325.

Inclusion in Dialog is not an endorsement of these products.

**If your item has been sold,  
or if you would like to place an ad,  
please contact Laura at 913-648-2062, or  
lball@alsa-midwest.org.**

## CONTACT INFORMATION

## Directors

*Kansas City* (913) 648-2062

**Beckie Cooper, Ext. 210**

Executive Director  
bcooper@alsa-midwest.org

**Sally Dwyer, Ext. 212**

Program Director  
sdwyer@alsa-midwest.org

**Eileen Brown, Ext. 209**

Development Director  
ebrown@alsa-midwest.org

**Pete Story**

President  
info@alsa-midwest.org

## Patient Services

*Kansas City* (800) 878-2062

**Linnea Brandt, Ext. 206**

lbrandt@alsa-midwest.org

**Nancy Lindquist, Ext. 204**

nlindquist@alsa-midwest.org

**Sarah Tucker, Ext. 202**

stucker@alsa-midwest.org

*Nebraska* (402) 991-8788

**Shannon Todd**

stodd@alsa-midwest.org

*Springfield* (888) 386-1200

**Debra Harlan**

dharlan@alsa-midwest.org

*Wichita* (800) 553-9056

**Jean Haley**

jhaley@alsa-midwest.org

## Fundraising

*Kansas City* (913) 648-2062

**Colleen Wachter, Ext. 221**

cwachter@alsa-midwest.org

**Kristin Spence, Ext. 211**

kspence@alsa-midwest.org

*Nebraska* (402) 991-8788

**Sherrie Hanneman**

shanneman@alsa-midwest.org

*Springfield* (417) 886-5003

**Mindy Wallace**

mwallace@alsa-midwest.org

*Wichita* (316) 612-0188

**Colleen Wachter**

cwachter@alsa-midwest.org

**Jo Harris**

jharris@alsa-midwest.org

**Chapter Website**

[www.alsa-midwest.org](http://www.alsa-midwest.org)

**Walk Website**

<http://walkkwc.alsa.org>

**National Website**

[www.alsa.org](http://www.alsa.org)

# THE DIALOG

Keith Worthington Chapter  
6950 Squibb Road, Suite 210  
Mission, KS 66202

Address Service Requested

Non Profit Org.  
U.S. Postage  
**PAID**  
Shawnee Mission, KS  
Permit No. 1249

Proud Member Of



in Kansas, Missouri and Nebraska

## 8 • THE DIALOG

F E B R U A R Y 2 0 0 8

### February Support Group Dates

*Phone RSVP's are requested if marked with \*  
Toll-free phone numbers are listed below.*

5	*Kansas City Evening <i>(Perri Cagle, Physical Therapist, range of motion issues)</i>	7:00 p.m.
5	*Omaha	6:30 p.m.
6	*Jefferson City	1:30 p.m.
6	Hutchinson	2:00 p.m.
7	Wichita	7:00 p.m.
8	*Kansas City Caregivers	12:30 p.m.
12	*Springfield	6:30 p.m.
13	*Kansas City Day (yoga)	1:30 p.m.
16	Wichita Caregivers	11:00 a.m.
21	Salina	7:00 p.m.
26	Nebraska Phone Group	7:00 p.m.
28	*Carl Junction	11:00 a.m.

### Support Group Locations

<b>Hutchinson, KS</b> Grace Episcopal Church 20th & Main	<b>KC Caregivers/Survivors</b> ALSA Bldg - 2nd Floor Mtg Rm <b>Please RSVP</b>	<b>Richmond, MO</b> Call Lea 816-776-6007
<b>Salina, KS</b> Church of the Cross Methodist Corner of W. Claflin & Rush St.	<b>KC Day (YOGA)</b> ALSA Bldg - 2nd Floor Mtg Rm	<b>Jefferson City, MO</b> Southridge Baptist Church 1815 Vieth Drive
<b>Topeka, KS</b> Shawnee Co. Public Library 1515 SW 10th Avenue * Meets every other month *	<b>KC Men</b> ALSA Bldg - 2nd Floor Mtg Rm <b>Please RSVP</b> * Meets every other month *	<b>Springfield, MO</b> Cox South Hospital Meeting Room #3
<b>Wichita, KS Caregivers</b> ALSA Office- 3450 N. Rock Rd, Bldg 200, Ste 211 <b>No need to RSVP</b>	<b>KC Evening</b> 2nd Presbyterian Church 55th and Oak	<b>Carl Junction, MO</b> Gambino's Pizza 1304 Pennell Street
<b>Wichita, KS</b> Grace Presbyterian Church 5002 East Douglas <b>No need to RSVP</b>	<b>Lawrence</b> Bert Nash Comm Health Ctr 200 Maine St., 1st floor mtg rm * Meets every other month *	<b>Omaha, NE</b> Abrahams Public Library 5111 N. 90th Street
		<b>Nebraska Phone Group</b> Call Shannon 866-762-6361

The Keith Worthington Chapter has offices in the following cities:

**Kansas City**  
(800) 878-2062

**Nebraska**  
(866) 762-6361

**Springfield**  
(888) 386-1200

**Wichita**  
(800) 553-9056